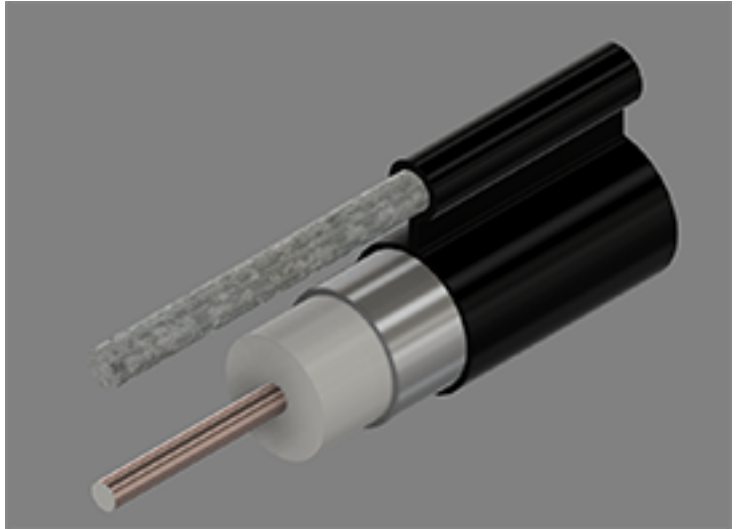


540 Series Coaxial Cable
Copper Clad Aluminum Conductor
Foamed Polyethylene Dielectric
Seamless Aluminum Tube Outer Conductor
Medium Density Polyethylene Jacket
0.109" Galvanized Steel Messenger



Cable Ordering Information

| Part Number | Description | NEC / CE Listing |
|----------------------|----------------------|------------------|
| 750540MS00BK07000001 | TX10540MS / 109 MESS | |

Characteristics

| Material | Detail | inches | mm |
|-----------------|------------------------------|--------|------|
| Inner Conductor | Copper Clad Aluminum | 0.124 | 3.15 |
| Dielectric | Foamed Polyethylene | 0.513 | 13.0 |
| Outer Conductor | Seamless Aluminum Tube | 0.540 | 13.7 |
| Floodant | --- | --- | --- |
| Jacket | Polyethylene, Outdoor, Black | 0.610 | 15.5 |
| Messenger | Galvanized Steel | 0.109 | 2.77 |
| Cable Width | --- | 0.975 | 24.8 |
| | --- | --- | --- |
| | --- | --- | --- |

Mechanical Specifications

| | | | |
|-------------------------------|-------------|-----|--------|
| Minimum Bend Radius, in. (mm) | | 4.0 | (102) |
| Product Weight | (less reel) | 135 | (201) |

Customers are reminded that they are SOLELY responsible for confirming that all products are properly installed and used in accordance with all applicable codes and regulations.

Document: tx10540ms 109_3.0ghz19.docx
Revision: 2019-09-09
Page: 1 of 2

Amphenol Broadband Solutions.
358 Hall Avenue
Wallingford, CT 06492
Toll Free +1-800-677-2288
Toll +1-434-432-1800
Fax +1-434-432-1821
www.timesfiber.com

uncontrolled copy

All Rights Reserved,
Specifications subject to change without notice

Electrical Specifications

| | | |
|----------------------------|----------------|---------------|
| Impedance, Ω | 75 \pm 2 | |
| Velocity of Propagation, % | 88 | |
| Capacitance, Nominal | 15.3 pF/ft | 50.2 pF/m |
| DC Resistance | Ω / kft | Ω / km |
| Inner Conductor | 1.02 | 3.35 |
| Outer Conductor | 0.59 | 1.94 |
| Loop | 1.61 | 5.29 |

Attenuation, Maximum @ 68 °F (20 °C)

| Frequency, MHz | dB / 100 ft | dB / 100 m |
|----------------|-------------|------------|
| 5 | 0.14 | 0.46 |
| 55 | 0.47 | 1.54 |
| 85 | 0.59 | 1.94 |
| 211 | 0.95 | 3.12 |
| 250 | 1.03 | 3.38 |
| 270 | 1.07 | 3.51 |
| 300 | 1.13 | 3.71 |
| 330 | 1.19 | 3.90 |
| 350 | 1.23 | 4.04 |
| 400 | 1.32 | 4.33 |
| 450 | 1.40 | 4.59 |
| 500 | 1.49 | 4.89 |
| 550 | 1.56 | 5.12 |
| 600 | 1.64 | 5.38 |
| 750 | 1.85 | 6.07 |
| 870 | 2.01 | 6.59 |
| 1002 | 2.17 | 7.12 |
| 1100 | 2.35 | 7.71 |
| 1200 | 2.44 | 8.01 |
| 1218 | 2.45 | 8.04 |
| 1300 | 2.54 | 8.33 |
| 1400 | 2.65 | 8.69 |
| 1625 | 2.75 | 9.02 |
| 1600 | 2.85 | 9.35 |
| 1700 | 2.94 | 9.65 |
| 1794 | 3.01 | 9.88 |
| 1800 | 3.04 | 9.97 |
| 2000 | 3.20 | 10.50 |
| 2200 | 3.38 | 11.09 |
| 2400 | 3.55 | 11.65 |
| 2600 | 3.72 | 12.20 |
| 2800 | 3.88 | 12.73 |
| 3000 | 4.04 | 13.25 |

Structural Return Loss

| | | |
|-----|--------|-----|
| MHz | | dB |
| | 5-1002 | -30 |

Customers are reminded that they are SOLELY responsible for confirming that all products are properly installed and used in accordance with all applicable codes and regulations.

Document: tx10540ms 109_3.0ghz19.docx
 Revision: 2019-09-09
 Page: 2 of 2

Amphenol Broadband Solutions.
 358 Hall Avenue
 Wallingford, CT 06492
 Toll Free +1-800-677-2288
 Toll +1-434-432-1800
 Fax +1-434-432-1821
www.timesfiber.com

uncontrolled copy

All Rights Reserved,
 Specifications subject to change without notice