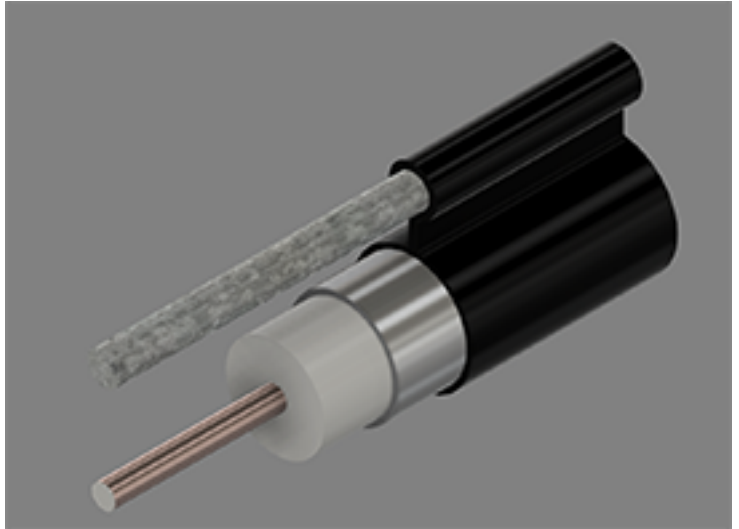


750 Series Coaxial Cable  
Copper Clad Aluminum Conductor  
Foamed Polyethylene Dielectric  
Seamless Aluminum Tube Outer Conductor  
Medium Density Polyethylene Jacket  
0.109" Galvanized Steel Messenger



**Cable Ordering Information**

Part Number	Description	NEC / CE Listing
750750MS00BK07000001	T10750MS / 109 MESS	

**Characteristics**

Material	Detail	inches	mm
Inner Conductor	Copper Clad Aluminum	0.166	4.22
Dielectric	Foamed Polyethylene	0.678	17.2
Outer Conductor	Seamless Aluminum Tube	0.750	19.1
Floodant	---	---	---
Jacket	Polyethylene, Outdoor, Black	0.820	20.8
Messenger	Galvanized Steel	0.109	2.77
Cable Width	---	1.125	28.6
	---	---	---
	---	---	---

**Mechanical Specifications**

Minimum Bend Radius, in. (mm)		6.0	( 152)
Product Weight	(less reel)	238	( 354)

Customers are reminded that they are SOLELY responsible for confirming that all products are properly installed and used in accordance with all applicable codes and regulations.

Document: t10750ms 109\_3.0ghz19.docx  
Revision: 2019-09-10  
Page: 1 of 2

Amphenol Broadband Solutions.  
358 Hall Avenue  
Wallingford, CT 06492  
Toll Free +1-800-677-2288  
Toll +1-434-432-1800  
Fax +1-434-432-1821  
www.timesfiber.com

**uncontrolled copy**

All Rights Reserved,  
Specifications subject to change without notice

**Electrical Specifications**

Impedance, $\Omega$	75 $\pm$ 2	
Velocity of Propagation, %	87	
Capacitance, Nominal	15.3 pF/ft	50.2 pF/m
DC Resistance	$\Omega$ / kft	$\Omega$ / km
Inner Conductor	0.58	1.90
Outer Conductor	0.17	0.56
Loop	0.75	2.46

**Structural Return Loss**

MHz		dB
	5-1002	-30

**Attenuation, Maximum @ 68 °F (20 °C)**

Frequency, MHz	dB / 100 ft	dB / 100 m
5	0.11	0.36
55	0.37	1.21
85	0.46	1.51
211	0.73	2.40
250	0.81	2.66
270	0.84	2.76
300	0.89	2.92
330	0.94	3.08
350	0.97	3.18
400	1.05	3.44
450	1.12	3.67
500	1.18	3.87
550	1.25	4.10
600	1.31	4.30
750	1.48	4.86
870	1.61	5.28
1002	1.74	5.71
1100	1.84	6.04
1200	1.93	6.33
1218	1.94	6.36
1300	2.01	6.59
1400	2.10	6.89
1625	2.18	7.15
1600	2.26	7.41
1700	2.34	7.68
1794	2.42	7.94
1800	2.43	7.97
2000	2.60	8.53
2200	2.75	9.02
2400	2.90	9.51
2600	3.04	9.97
2800	3.18	10.43
3000	3.32	10.89

Customers are reminded that they are SOLELY responsible for confirming that all products are properly installed and used in accordance with all applicable codes and regulations.

Document: t10750ms 109\_3.0ghz19.docx  
Revision: 2019-09-10  
Page: 2 of 2

Amphenol Broadband Solutions.  
358 Hall Avenue  
Wallingford, CT 06492  
Toll Free +1-800-677-2288  
Toll +1-434-432-1800  
Fax +1-434-432-1821  
www.timesfiber.com

**uncontrolled copy**

All Rights Reserved,  
Specifications subject to change without notice